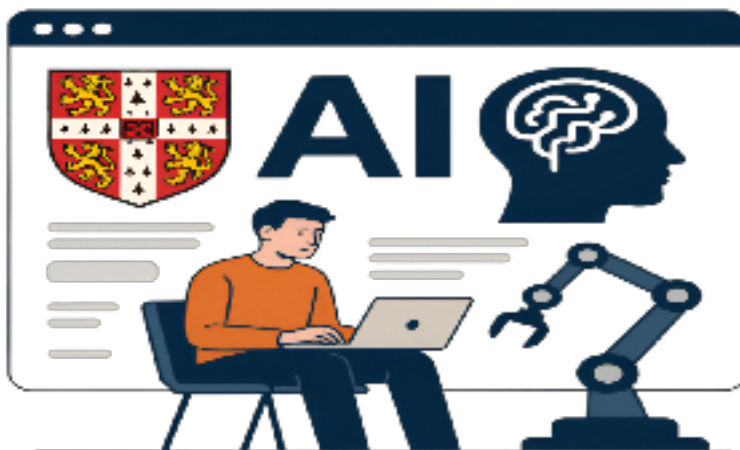
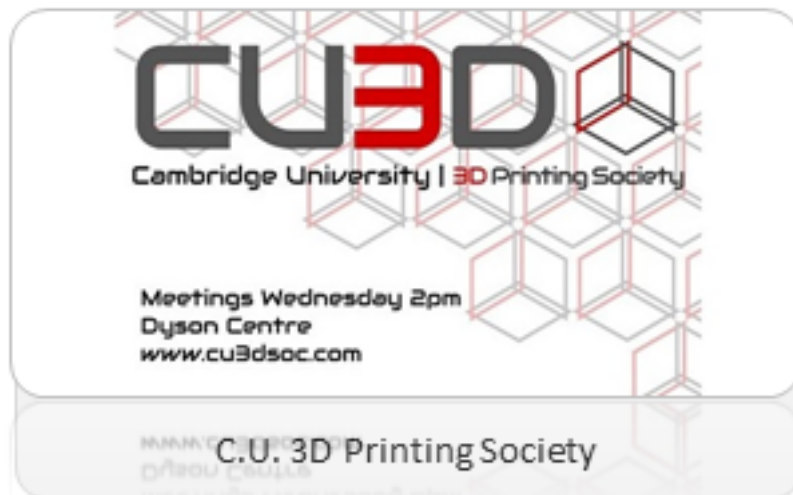


Student-led societies

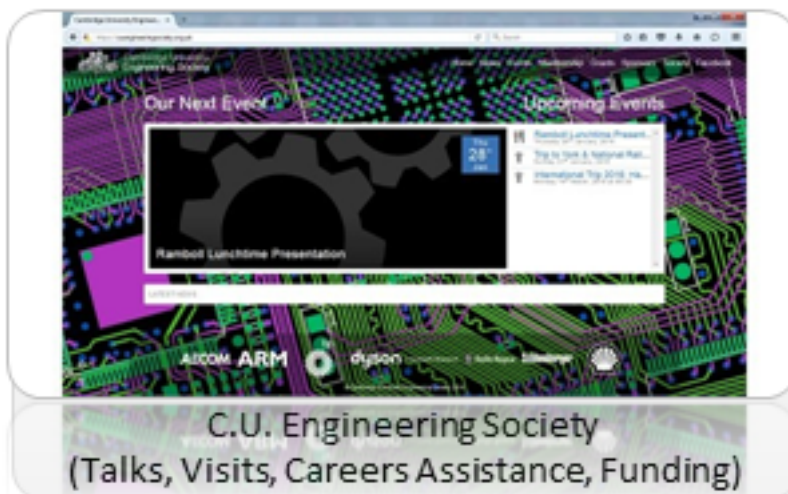
The Department hosts, or is associated with, a number of student-led societies, teams, groups and clubs, which students may be interested in joining. Those currently active are listed below.

Non-Engineering students involved in Engineering Department based student-led projects who need access to the Engineering Department buildings and/or Engineering IT facilities, should in the first instance contact their society leader, and ask them to make contact with [Dr Rich Roebuck](#) on their behalf, endorsing their request.



Student-led societies

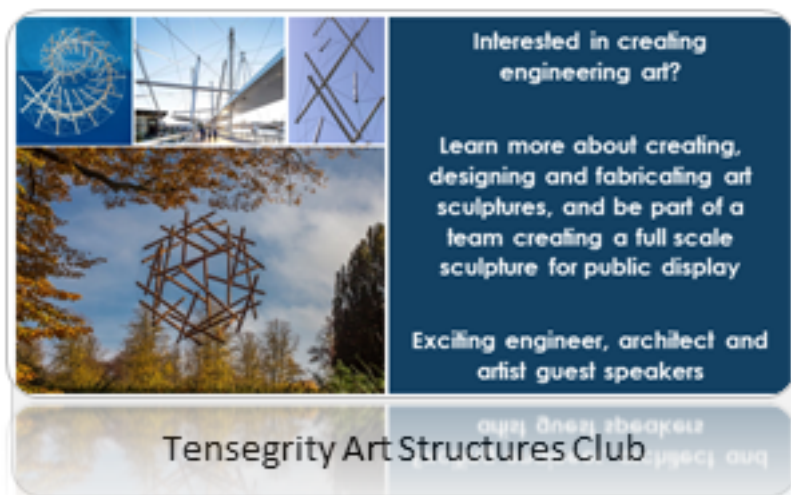
Published on CUED undergraduate teaching site (<https://teaching.eng.cam.ac.uk>)





Student-led societies

Published on CUED undergraduate teaching site (<https://teaching.eng.cam.ac.uk>)



[CUABC - Cambridge AI Builder Club](#)

[CUE - Cambridge University Entrepreneurs](#)

[CURR - Cambridge University Riviera Racing](#)

[CUWES - Cambridge University Women in Engineering Society](#)

[CUDS \(formerly HC\) - Cambridge University Design Society \(formerly Hercules Cambridge\)](#)

Many of these societies are supported by the [Student-led Projects and Industry Partnership \(SPIP\)](#).

Any society that wishes to be linked to from this page should contact [Dr Rich Roebuck](#).

Source URL (modified on 08-02-26): <https://teaching.eng.cam.ac.uk/content/student-led-societies>